

FINAVIA
for smooth travelling

Helsinki Airport
Local air quality

NALM, Vantaa, Finland

Johanna Kara

15-16.11.2016

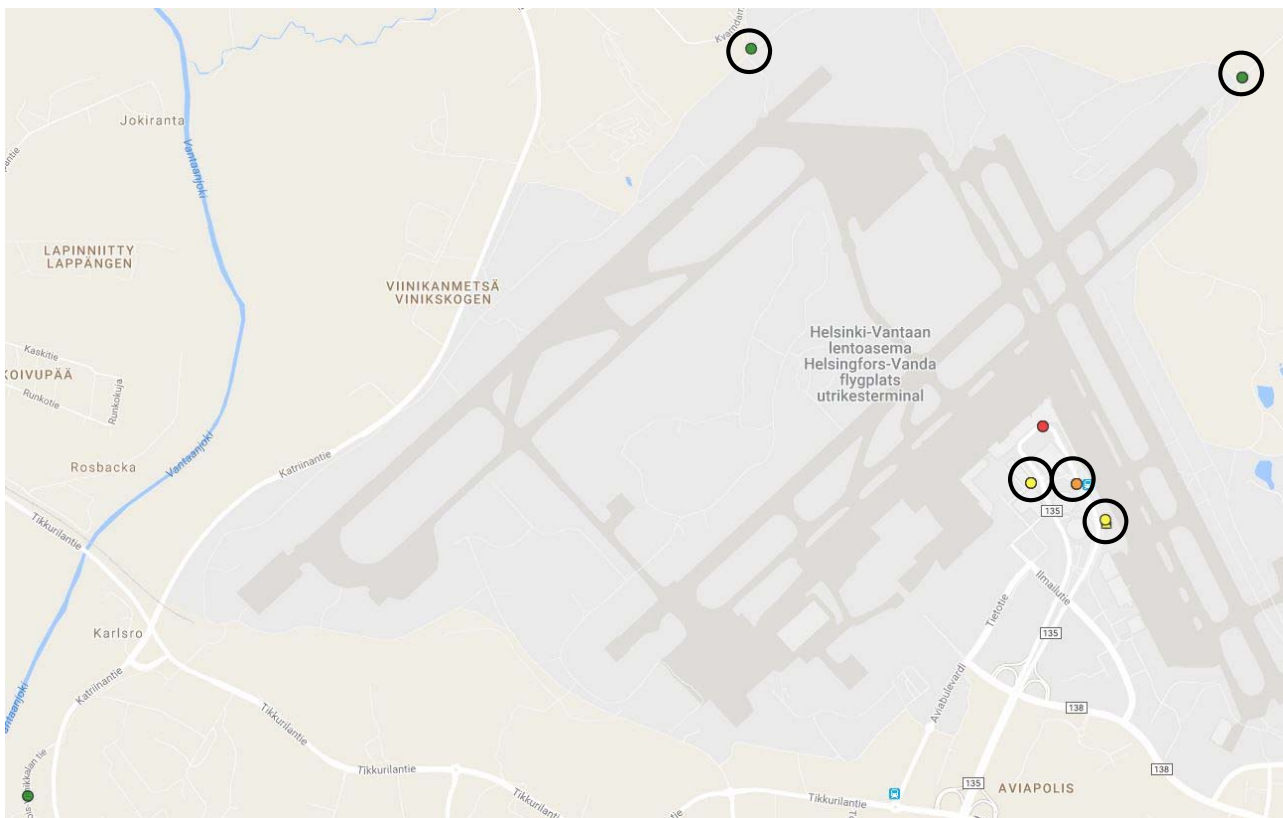
FINAVIA

Metropolitan area NO₂ passive collectors

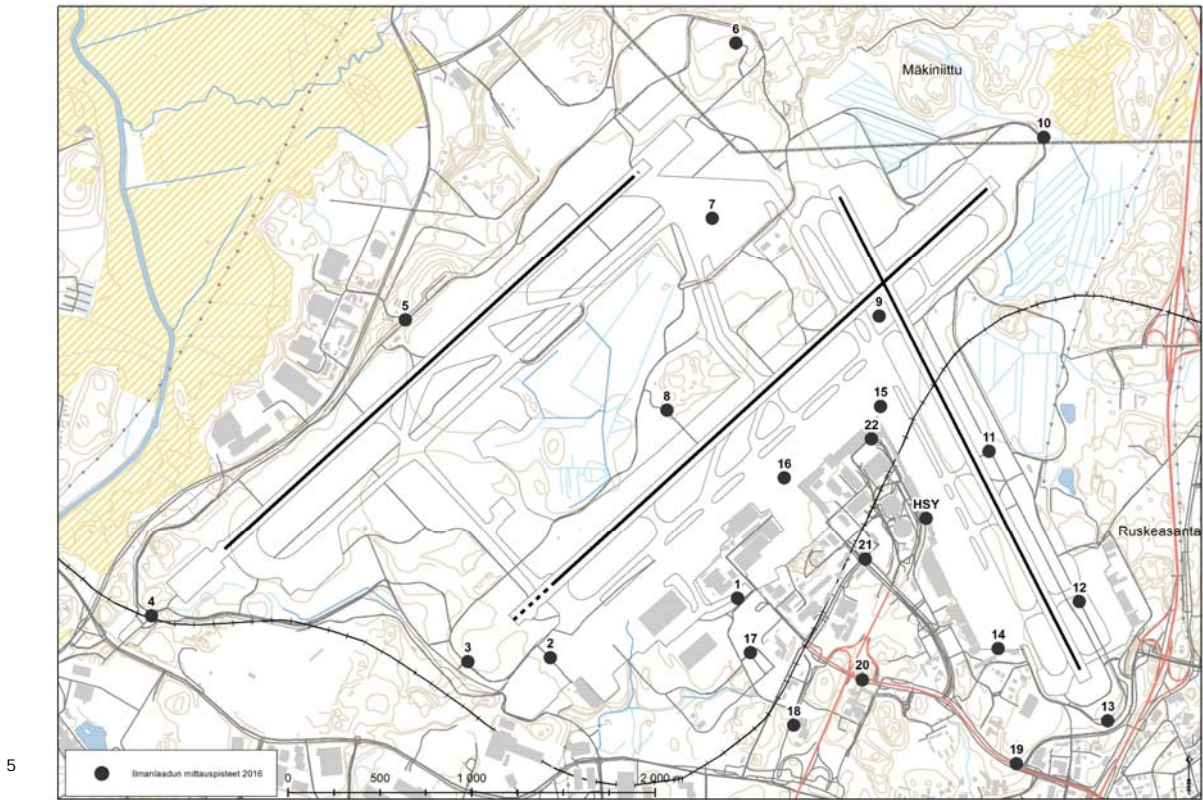
Environmental permission requirement
 Airport area metering points

Metering point	Annual average NO ₂ µg/m ³				
	2007	2012	2013	2014	2015
Myllypadontie				12	12
Lammaskaskentie			13	12	12
Rahtitie	27			23	24
Terminaali 1		42	39	37	37
Terminaali 2		47	45		
Lentäjätie 3		24	22	20	21
Pohjois-Viinikkalantie			16		

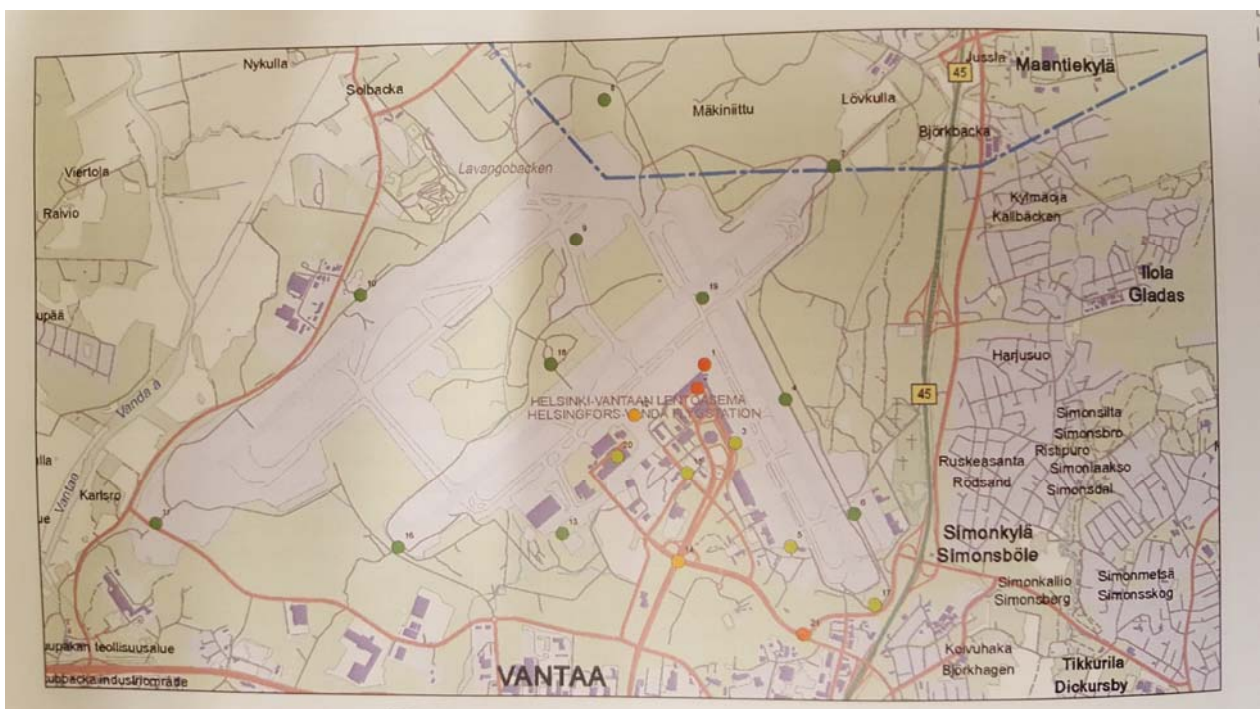
FINAVIA



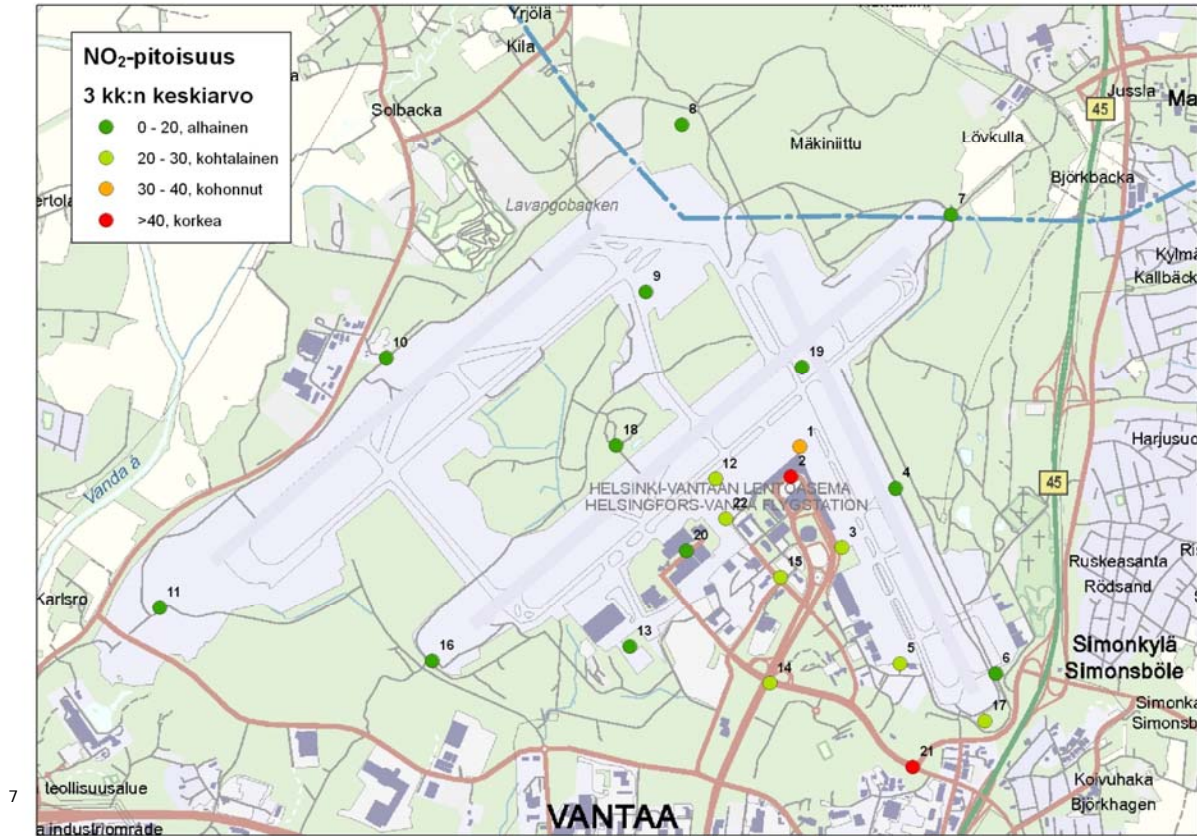
Laajempi passiivikeräinmittaus (loka-joulu 2016)



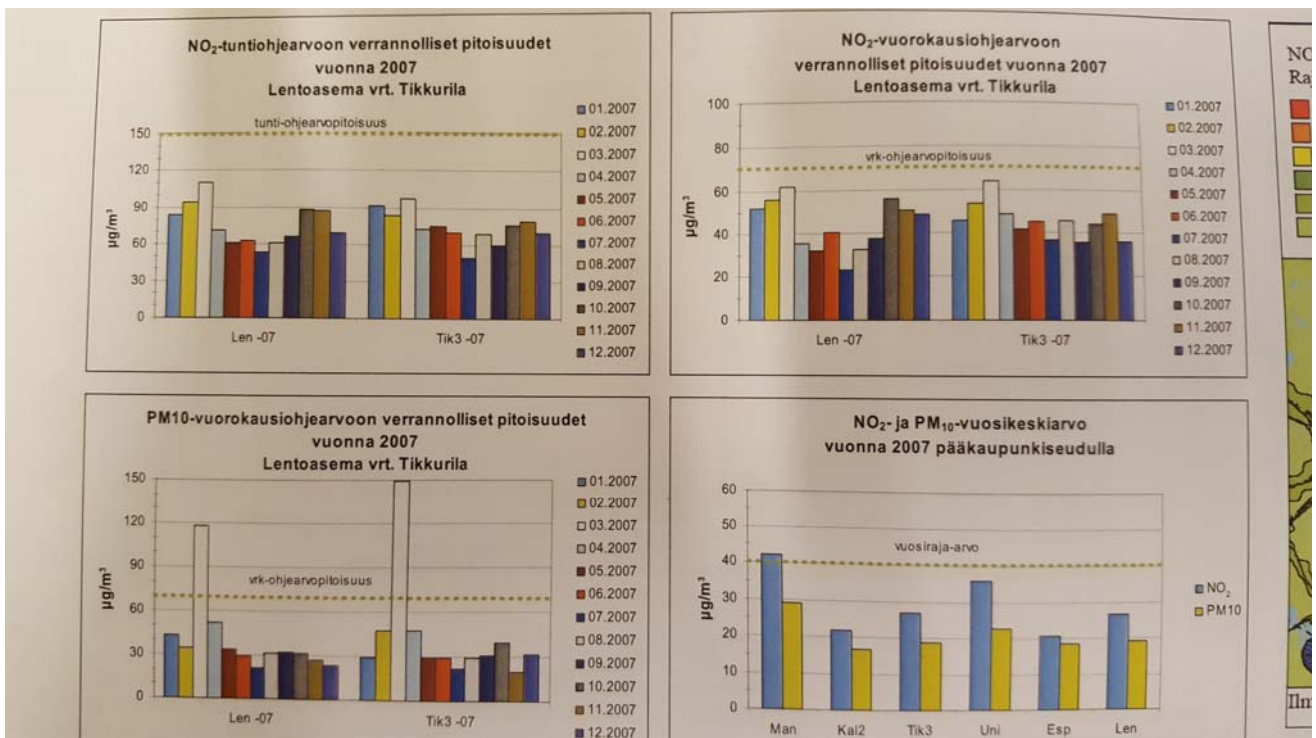
2006 NO2 passive collectors



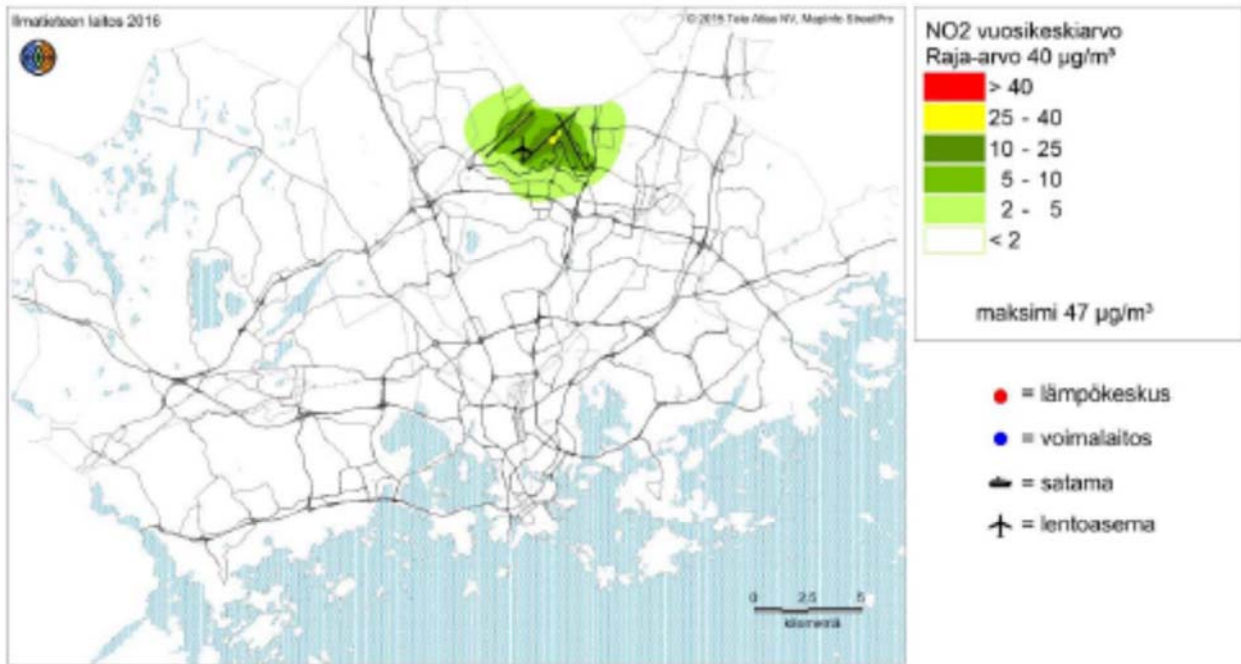
2011 passive collectors



2007 NO2 and PM10



Metropolitan area NO₂ emissions dispersion calculations (Finnish meteorological institute) 2014 data



Kuva 6. Lentoliikenteen ja lentoasematoiminnan päästöjen aiheuttama typpidioksidin (NO₂) korkein vuosikeskiarvopitoisuus (µg/m³).

Metropolitan area NO₂ emissions dispersion calculations (Finnish meteorological institute)

- The highest emissions of NO₂ from air traffic ja airport activities are outside the airport arealentoaseman about 25 % of the limit at the highest
- The effect of emissions is low over 5 km
- NO₂-concentration can be higher then the daily limit only on runways or close by
- Total emissions 2004 (up to 305 m) 276,2 t/a
- Total emissions 2014 (up to 305 m) 305,6 t/a



Thank you!

FINAVIA