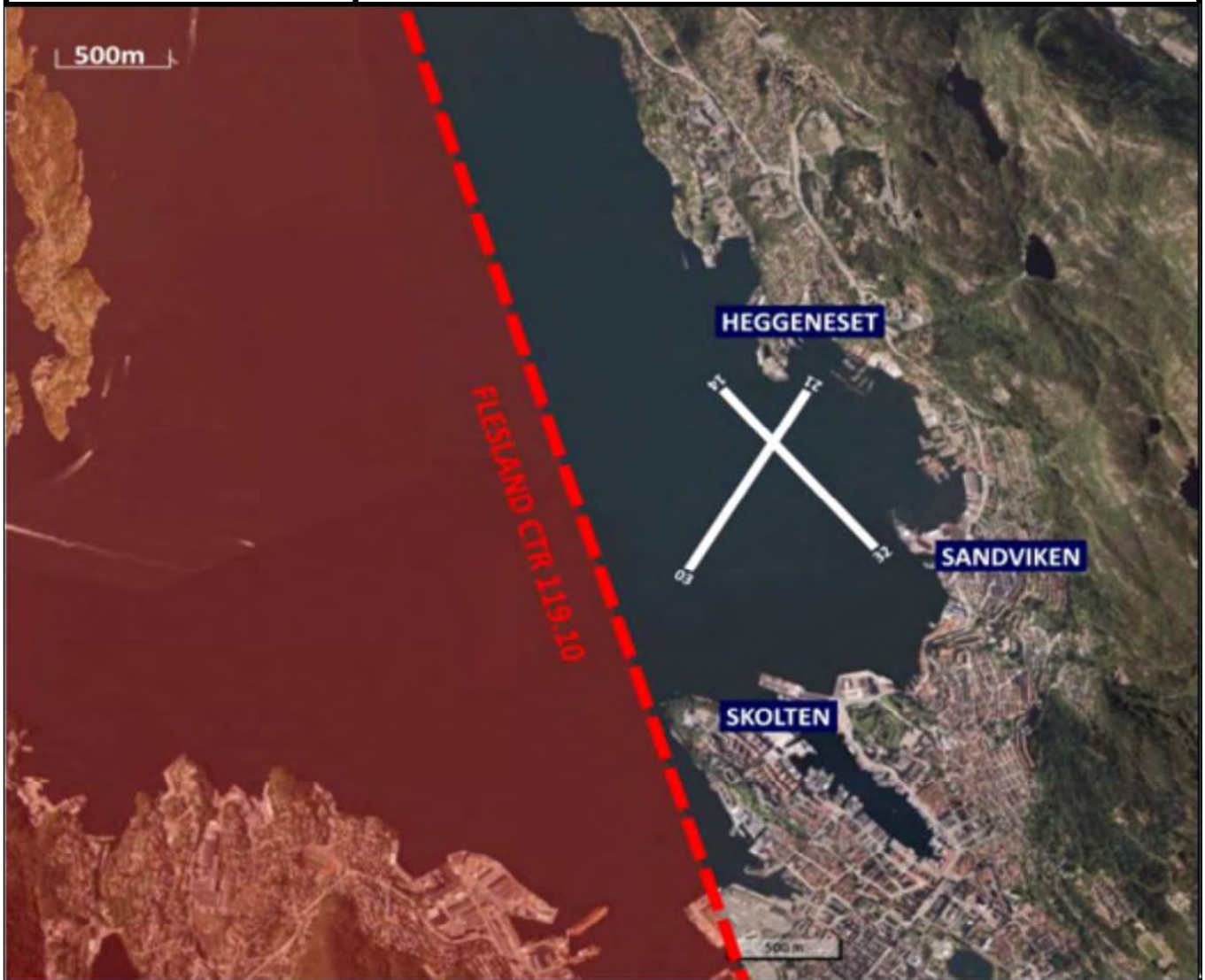




**SANDVIKEN** 60°24.67N  
005°18.71E  
**NORWAY CAT B**

**LANDING CHART**

REV 0 16.09.2021



APPROXIMATE ELEVATION	S.L.
AVAILABLE LDG DIRECTIONS	03-14-32
AVAILABLE TKOF DIRECTIONS	21-32
KNOWN OBST IN RWY AREA	SILOBUILDING
VESSEL TRAFFIC INTENSITY	MODERATE
COMMERCIAL VESSEL TRAFFIC	YES
SFC OBST IN TKOF/LDG AREA	TERRAIN FINAL 32
PIER CONTACT TEL	90510641 95861771

AIRSPACE	G
ATC AREA	FLESLAND
ATC FREQ	APP EAST 126.10 TWR 119.10 UNICOM 123.50
RESP ACC	POLARIS SECTOR 17 124.70
NRST QNH	ENBR ATIS 125.25
FUEL	AVAILABLE

**LIMITATIONS - VFR DAY OPERATIONS ONLY AS FOLLOWS:**

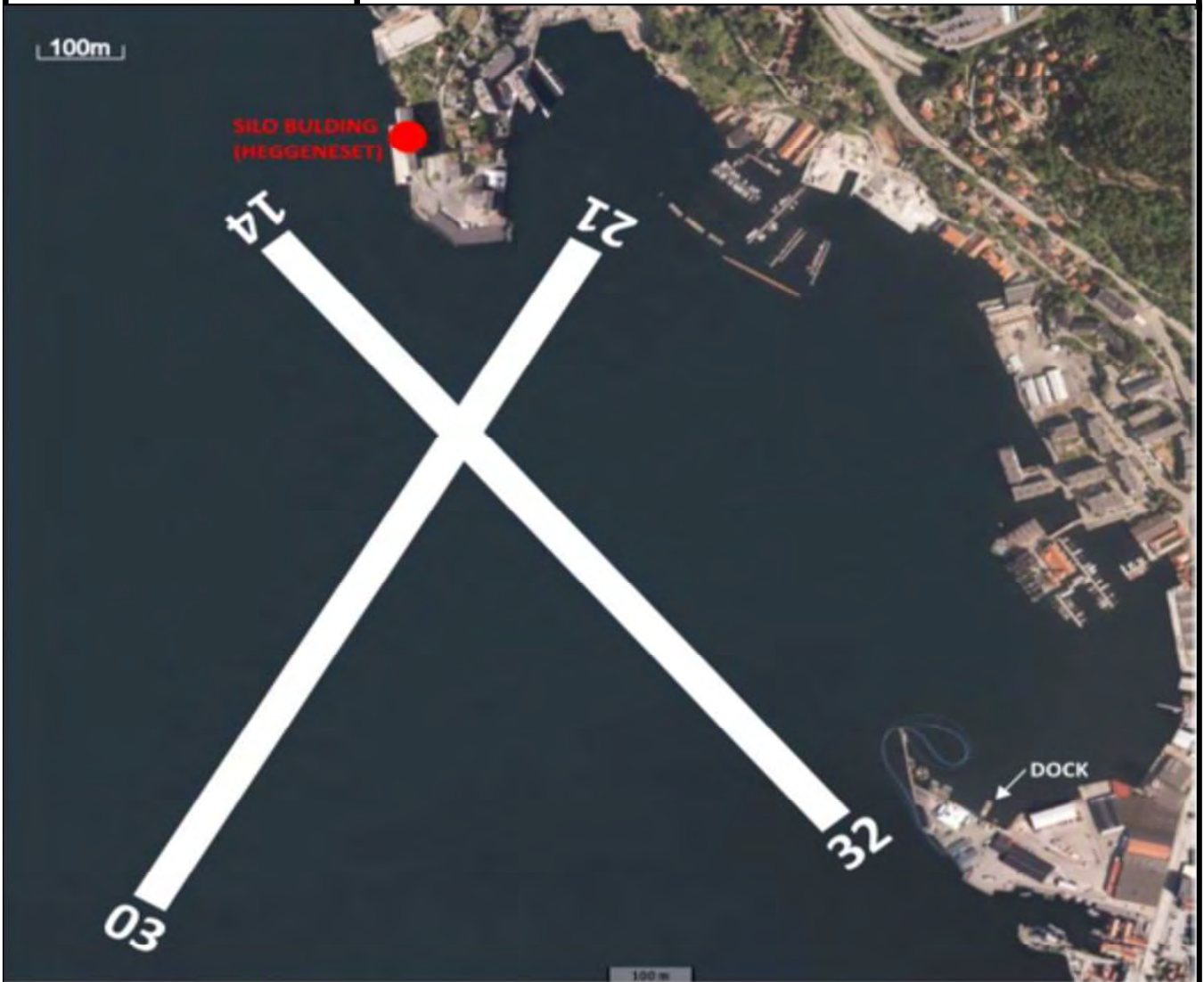
WEEKDAYS: 8AM TO 10PM  
SUNDAYS & PUBLIC HOLIDAYS: 10AM TO 8:30PM



**SANDVIKEN** 60°24.67N  
005°18.71E  
**NORWAY CAT B**

# DOCKING CHART

REV 0 16.09.2021



<b>DOCK ACCESS</b>	SS CONCESSION
<b>DOCK MATERIAL</b>	CONCRETE
<b>MOORING AIDS</b>	FENDERED, CLEAT'S
<b>DOCKING</b>	INNER LONGSIDE & END
<b>DOCK TYPE</b>	FLOATING
<b>DOCK AREA DEPTH</b>	3 M
<b>DOCK HAZARDS</b>	FIREBOAT DOCKED AT OUTER LONGSIDE, AFT END OF THE BOAT WITH A VERTICAL LADDER IS CLOSE TO DOCK END. BE AWARE IN SOUTHERLY WIND WHEN DOCKING WITH RIGHT FLOAT.





**SANDVIKEN** 60°24.67N  
005°18.71E  
**NORWAY CAT B**

**TEXT PAGE 1/2**

REV 0 16.09.2021

## TAKE-OFF AND LANDING PROCEDURES

### PROCEDURES

#### T/O RWY 21

AFTER T/O RIGHT TURN CLIMBOUT TO SAFE ALTITUDE OVER BYFJORDEN.

#### T/O RWY 32

AFTER T/O CLIMB STRAIGHT AHEAD TO SAFE ALTITUDE OVER BYFJORDEN.

#### T/O RWY 03 & 14

NOT IN USE

#### LANDING RWY 32

AVOID LOW FLYING OVER CONGESTED AREAS. MISSED APPROACH NORTHBOUND ALONG BYFJORDEN.

#### LANDING RWY 14

MISSED APPROACH LATEST ABEAM HEGGENESET - RIGHT TURN TOWARDS BYFJORDEN.

#### LANDING RWY 03

AVOID LOW FLYING OVER CONGESTED AREAS. MISSED APPROACH LATEST ABEAM SKOLTEN - LEFT TURN TOWARDS BYFJORDEN.

#### LANDING RWY 21

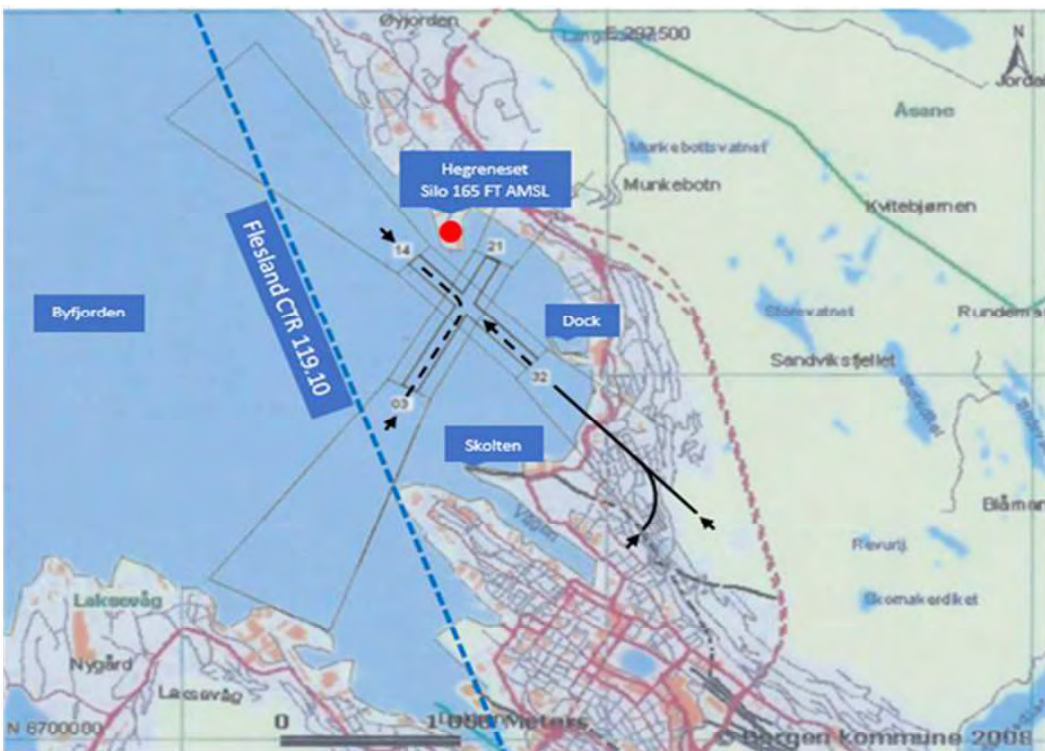
NOT IN USE

### NOTE

IF INTENSIONS TO ENTER FLESLAND CTR REGUEST CLEARANCE BEFORE DEPARTURE WITH FLESLAND TWR. ALWAYS STATE INTENSIONS BEFORE DEPARTURE ON UNICOM 123.5 DUE TO LOCAL HELICOPTER TRAFFIC.

WIND DIRECTIONS BETWEEN N -SE ABOVE 15 KT CAN CAUSE DOWNDRAFTS FROM SANDVIKFJELLET. WIND DIRECTION BETWEEN SW - NNW ABOVE 15 KT CAN CAUSE ROUGH WATER.

### MISSED APPROACH CHART:



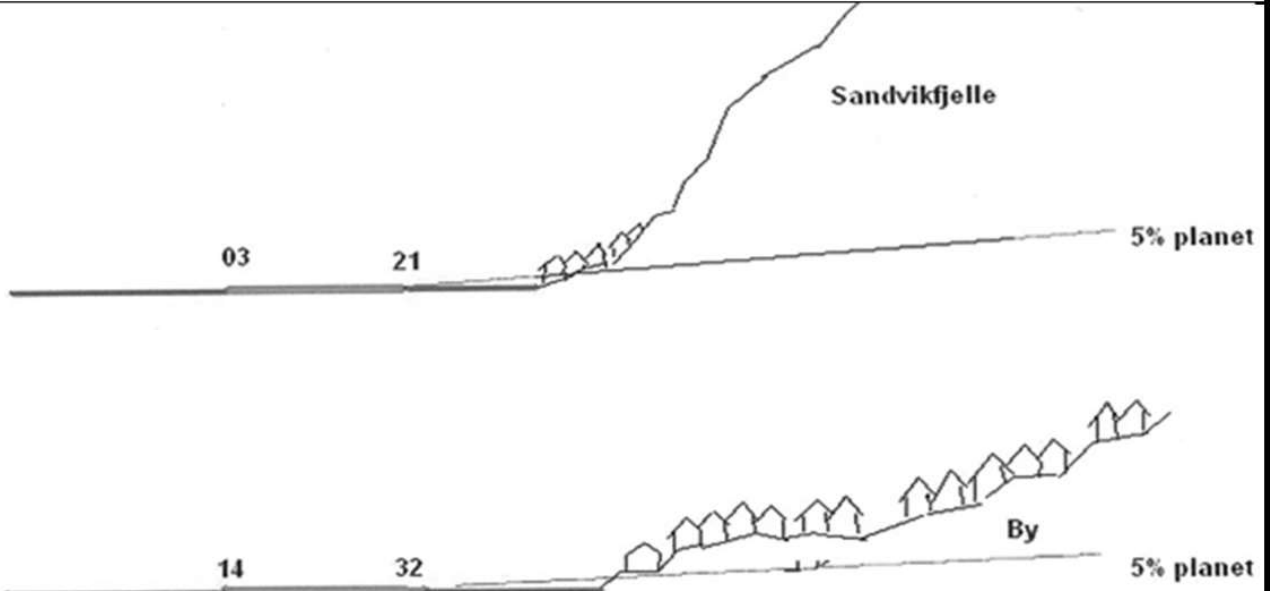


**SANDVIKEN** 60°24.67N  
005°18.71E  
**NORWAY CAT B**

**TEXT PAGE 2/2**

REV 0 16.09.2021

### OBSTACLE CHART & TAXI ROUTES



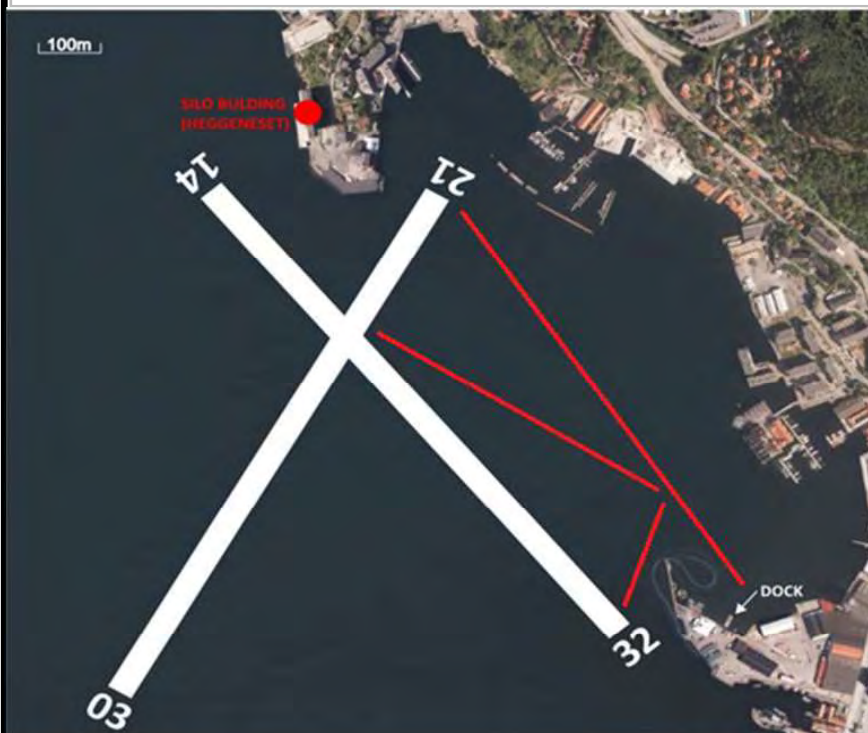
#### OBSTACLES RWY 03

BUILDINGS FROM THE SHORELINE AND UP THE MOUNTAINSIDE STEEP ASCENDING TO APPROX. 1500 FT

#### OBSTACLES RWY 14

FROM THE SHORELINE ASCENDING TERRAIN WITH BUILDINGS UP THE MOUNTAINSIDE TO APPROX 1000 FT

#### TAXI ROUTES:



Red lines indicate normal taxi routes to and from the seaplane base. The indicated routes do not give preferential rights in relation to other traffic at the sea. The rules of the sea regulate the duty to give way.